

# Panasonic

AG-MX70  
Digital A/V Mixer



  
DYNAMIC  
ROUNDING™

# AG-MX70 Digital A/V Mixer

**4:2:2:4 Picture Quality, 3D Effects, SDI In/Out, and Title Animation — Plus Easy Operation and Outstanding Cost-Performance.**

With the AG-MX70 digital A/V mixer, Panasonic has integrated a 2-BUS, 8-input video switcher, multi-functional digital video effects unit with high-end performance, and an audio mixer into a single compact unit.

The AG-MX70 provides broadcast-grade 4:2:2:4 digital component picture quality.

It features more than 600 effect patterns and a 30-frame graphics buffer for roll, crawl, and logo animation using title files downloaded from a PC. A large LCD panel with a matrix menu helps assure quick, easy operation. Offering optional 3D video effects and SDI interface, this A/V mixer is ready for full-fledged digital post-production.

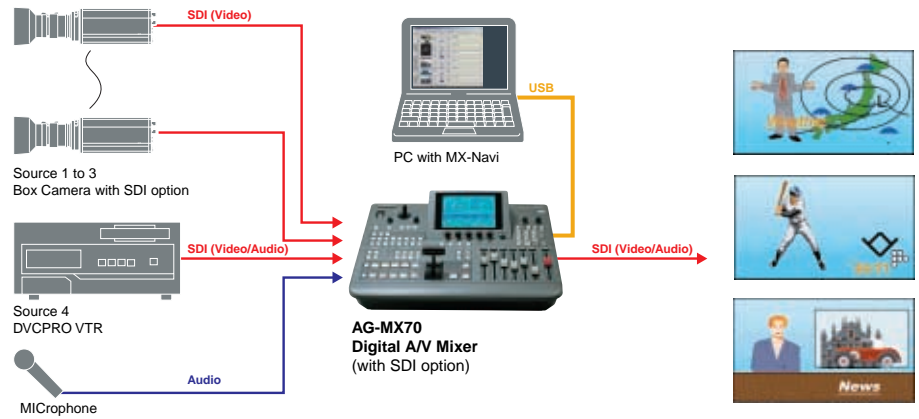
The versatile AG-MX70 is right at home when connected to 25 Mbps DVCPRO VTRs in a digital editing system, or when used as a switcher either in the studio or at live events.



# System Applications

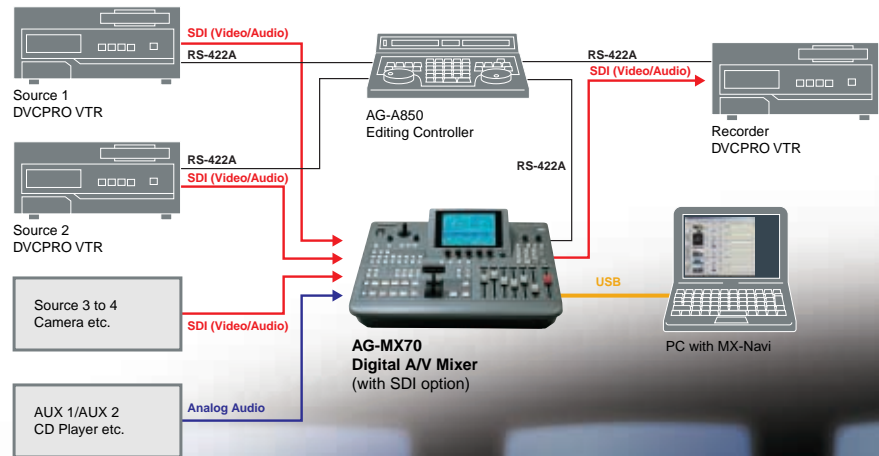
## Live Application

Eight video inputs, each with tally output, and M/E and DSK preview prepare the AG-MX70 for use as a switcher with multi-camera feeds for live studio or event applications. Adding the optional SDI interface also enables high-quality digital input. Titles and graphics created on a PC can be downloading from MX-Navi application, and easily superimposed for use in live production programming.



## Editing Application

Standard-equipped RS-422A and RS-232C remote terminals and a GPI terminal allow the AG-MX70 to team up with the AG-A850 or other-brand editing controller, for A/B roll editing. With the SDI interface option on-board, a high-quality, fully digital editing system can also be configured with a DVCPRO VTR. The MX-Navi title insertion program brings the quality of program production to a level approaching many high-end systems.



# Creative, Intelligent, Versatile



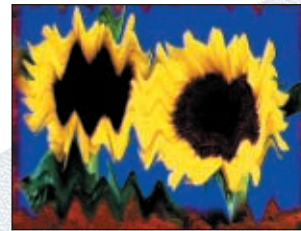
Accordion



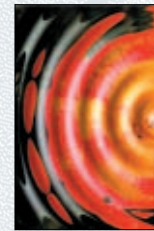
Flag



Page turn



Melt



## 4:2:2:4 Digital Processing, 16:9 Wipe Patterns

The AG-MX70 provides high quality 4:2:2:4 digital component signal processing, and wipe patterns accommodates both 16:9 and 4:3 image production needs.

## Large LCD Screen, Matrix Menu

A large LCD panel permits easy monitoring of system status. A five-row matrix menu display with five rotary switches makes it easy to understand and set the AG-MX70's multitude of functions. The menu, which is linked to keys on the operating panel, automatically switches to show the necessary settings. This simplifies operation and reduces steps.

## 2D and 3D Video Effects

Equipped with over 600 2-dimensional effects -- including transition and key patterns, mosaic, paint, trail, and multi-image digital effects -- the versatile AG-MX70 has all it takes to create professional production results. The optional AG-VE70 3D Effects Board provides more than 1,600 3D digital effects, including page turn, ripple, and sphere. The 2D and 3D effects can be combined to create sophisticated image expressions that rival many high-end DVEs.

## Roll, Crawl, and Logo Animation

MX-Navi makes it easy to download graphics files (TGA, BMP, JPEG) created with the other graphics applications, via a USB terminal. Downloads go to the internal graphics buffer\* for use in creating roll or crawl titles, logo animation, and other effects.

\*NTSC: 640 x 480 pixels x 30 frames, PAL: 768 x 576 pixels x 26 frames

## Serial Digital In/Out

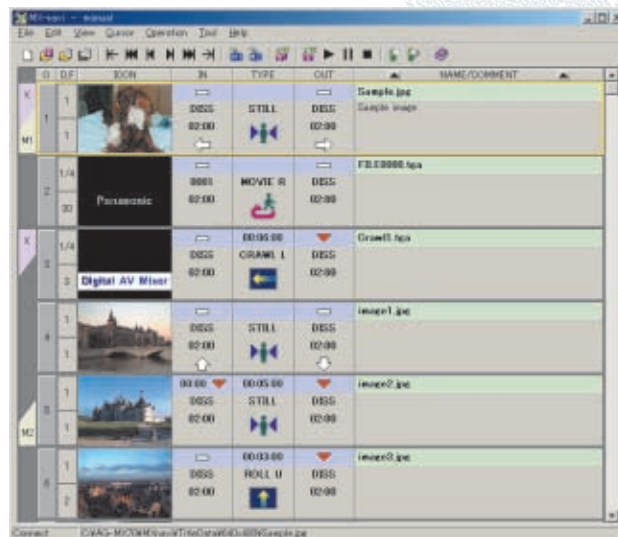
Adding the optional AG-YA70 SDI Board gives the AG-MX70 a 4-input/1-output serial digital component interface (SMPTE 259M-C). This is ideal for configuring an editing system with DVCPRO or other digital VTRs.

## 8 Video Inputs

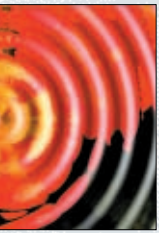
The AG-MX70 is ready for live multi-camera feeds, with a total of eight analog composite inputs, or four analog component Y/Pb/Pr or YC inputs and four SDI inputs.

## Joy Stick Controller

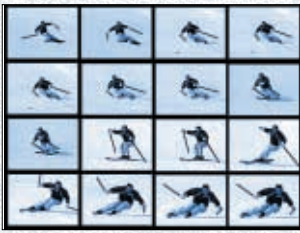
The easy-to-handle joy stick lets you intuitively position or size your effects, and select or adjust colors.



MX-Navi application window



Ripple



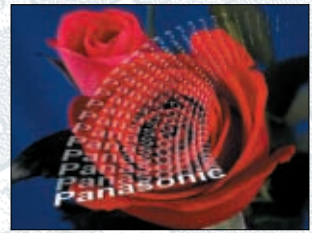
Multi screen



Sphere



Trail



Title Animation

### Audio Mixing

The AG-MX70 provides versatile audio mixing with four Stereo Inputs plus two Auxiliary Mono Inputs, one of which may be a mic input. Audio can be linked or unlinked to video transitions. The AG-MX70 is also equipped with a headphone jack. The level meters are displayed on the LCD.

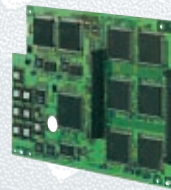
### Tally Output

Tally outputs for up to eight cameras are provided, for using the AG-MX70 as a switcher at live events.

### Other Functions

- Numeric keypad for setting pattern numbers and other values.
- A total of 13 patterns are preset; other patterns can be stored in memory.
- Digital chroma key, digital luminance key
- M/E(Mix Effects) preview, DSK(Down Stream Key) preview
- Editor terminal (9-pin) for either RS-422 or RS-232C connection

### Optional Boards



AG-VE70  
3-Dimension Effects Board



AG-YA70  
Serial Digital Interface Board



# SPECIFICATIONS

## GENERAL

Power Source:	120VAC, 50/60Hz (AG-MX70P), 220 — 240VAC, 50/60Hz (AG-MX70E)
Power Consumption:	50W (Standard), 70W (Full Option)
Operating Temperature:	5° to 40°C
Operating Humidity:	Less than 90% (non dew)
Dimensions:	16-3/4" (W) x 7-13/16" (H) x 15-3/4" (D) 425 (W) x 198 (H) x 400 (D) mm
Weight:	16.5 lbs (7.5 kg) in Standard 17.6 lbs (8.0 kg) with Full Option
Standard Accessory:	Power cable, CD-ROM

## VIDEO

Video Format:	625/525 switchable
Sampling Frequency:	Y: 13.5 MHz, Pb/Pr: 6.75MHz, Key: 13.5MHz(4:2:2:4)
Quantization:	A/D: 9 bit (source 1—8) Ext. key: 8 bit Internal Process: 8 bit with dynamic rounding D/A: 10 bit
Gain:	Unity (100% ±2%)
Band width:	Y: 0.5MHz to 5.0 MHz (±1.0 dB), Pb/Pr: 0.25MHz to 2.5 MHz (±1.0 dB)
S/N ratio:	56 dB(component), 50 dB(composite or YC)
K factor:	Less than 1%
DG/DP:	Less than 3%/3°
PLL Frequency Range:	Sync: fh±300 Hz, SC: fsc±40 Hz fh=15.734kHz (AG-MX70P)/15.625kHz (AG-MX70E) fsc=3.58MHz (AG-MX70P)/4.43MHz (AG-MX70E)
System Delay:	Max. 1-frame

## AUDIO

Sampling Frequency:	48 kHz
Quantization:	Analog Input: 20bit, Digital Input (option): 24bit
Frequency Response:	20 Hz to 20 kHz (±1.0 dB)
Dynamic Range:	More than 85dB (analog In/out)
THD:	Less than 0.05% (1 kHz, alimnet level)
Cross Talk:	Less than -70 dB (1 kHz, between any two channels)
Headroom:	20 dB/18 dB switchable
Digital Audio:	SDI Embedded Audio (option) 2CH ( Ch-1&2/3&4/5&6/7&8 selectable)

## VIDEO INPUT

Analog Component :	BNC x 4 (SOURCE 1/2/3/4), Y: 1.0 Vp-p 75 Ω , Pb/Pr (AG-MX70P): 0.525/0.757 Vp-p switchable 75Ω, Pb/Pr (AG-MX70E): 0.7 Vp-p 75Ω
Analog Composite:	BNC x 8 (SOURCE 1 — 8), 1.0Vp-p 75Ω
S-Video:	Mini-DIN4 x 4 (SOURCE 1/2/3/4), Y: 1.0 Vp-p, 75Ω, C: 0.286Vp-p 75Ω (AG-MX70P), 0.3Vp-p 75Ω (AG-MX70E)
External Fill:	BNC x 1 (Y/Pb/Pr), Analog Component, Y: 1.0 Vp-p 75Ω Pb/Pr (AG-MX70P): 0.525/0.757 Vp-p switchable 75Ω Pb/Pr (AG-MX70E): 0.7 Vp-p 75Ω *Y signal will be clipped at lower than pedestal level.
External Key :	BNC x 1, 1.0Vp-p, 75Ω, Analog Composite or Y+Sync
Genlock:	BNC x 1 (with passive-loop-through), 1.0Vp-p 75Ω On/Off
SDI (Option) :	BNC x 4 (IN 1/2/3/4), SMPTE 259M-C/EBU Tech.3267-E

## VIDEO OUTPUT

Analog Component :	BNC x 2, Y: 1.0 Vp-p 75 Ω Pb/Pr (AG-MX70P): 0.525/0.757 Vp-p switchable 75Ω Pb/Pr (AG-MX70E): 0.7 Vp-p 75Ω
Analog Composite:	BNC x 2, 1.0Vp-p 75Ω
S-Video:	Mini-DIN4 x 2, Y: 1.0 Vp-p, 75Ω, C: 0.286Vp-p 75Ω (AG-MX70P), 0.3Vp-p 75Ω (AG-MX70E)
AUX:	BNC x1, 1.0Vp-p 75Ω
8H Advanced Reference:	BNC x 1, 75Ω, Sync: 0.286(AG-MX70P)/0.3 Vp-p (AG-MX70E) Burst: 0.286(AG-MX70P)/0.3 Vp-p (AG-MX70E)
SDI (Option):	BNC x 1, SMPTE 259M-C/EBU Tech.3267-E

## VIDEO INPUT ADJUSTMENT

AGC:	Y: +2dB to -6dB, C: +2dB to -6dB (composite and YC input only)
Setup Level:	0/7.5 IRE switchable (composite and YC, 525 mode only)
VIDEO OUTPUT ADJUSTMENT :	
Setup Level:	0/7.5IRE switchable (composite and YC, 525 mode only)
System H Phase:	-0.25 H to +0.25 H (74 ns/step)
System SC Phase:	±180°

## AUDIO INPUT

Analog (L/R):	XLR x 8, +4/0/-3 dBu switchable, 10kΩ
Analog (L/R):	RCA x 4 (AUX 1/2), -8.0 dBV, 10KΩ, unbalanced
MIC:	M6 x 1, -60 dBu, 2kΩ, unbalanced
SDI (Option):	BNC x 4, Embedded Audio (CH1/2, 3/4, 5/6, 7/8 switchable)

## AUDIO OUTPUT

Analog (L/R):	XLR x 2 (PROGRAM 1), +4/0/-3 dBu switchable, 47Ω
Analog (L/R):	RCA x 2 (PROGRAM 2), -8.0 dBV, 47Ω
Headphone:	M6 x 1, 8Ω, unbalanced, -20 dBu to -60 dBu
SDI (Option):	BNC x 1, Embedded Audio (CH1/2)

## OTHER PORT

Editor:	D-sub 9-pin, RS-422A/232C switchable RS-422A Protocol: GVG/Sony switchable
Connectable Editor:	Panasonic: AG-A850, SONY: BVE-2000, BVE-910, BVE-700, PVE-500
Tally Out:	D-sub 9-pin, Open-Collector x 8ch Collector Current: Less than 50mA, Maximum Voltage: 35VDC
GPI:	BNC x 1, Voltage (TTL-level) or Make-contact (pull-up resistor = 10kΩ), Low-Active
USB:	Type-B connector x 1, USB Ver.1.1 (cable length: max. 3m)

## FUNCTIONS

Video Effects:	Nega, Mosaic, Mono, Paint, Strobe, Multi, Trail, Frame/Field-Still, Defocus, Decay, Mirror
Matte Colors:	White, Yellow, Cyan, Green, Magenta, Red, Blue, Black, Color-Bar, Custom 1/2
Wipe/Transition Patterns:	More than 600 patterns (standard), More than 1,600 patterns (with optional 3D Effect Board)
Event Memory:	100 Events
Joystick Control:	Positioner, Color Correction.
Audio Mixer:	SOURCE-1 to 8, AUX-1, AUX-2/Mic, Master
Audio Effects:	3 Band-EQ, Pan, Attenuator, Voice Changer
Others:	Audio-Follow, Auto-Take, Auto-Fade, Memory, Audio&Video Input-Assign

Weight and dimensions shown are approximate.  
Specifications are subject to change without notice.  
These products may be subject to export regulations.

Dynamic Rounding licensed from Quantel, Ltd. The DR Logo is a trademark of Quantel Ltd .

# Panasonic

Matsushita Electric Industrial Co., Ltd.  
Systems Business Group  
2-15 Matsuba-cho, Kadoma, Osaka 571-8503  
Japan  
Tel. 81-6-6905-4650 Fax. 81-6-6908-5969  
[www.panasonic.co.jp/bsd](http://www.panasonic.co.jp/bsd)

## Countries and Regions

Argentina	Tel. 54-1-308-1610	Jordan	Tel. 961-6-586-1914
Australia	Tel. 61-2-9887-6222	Korea	Tel. 82-2-784-0245
Austria	Tel. 43-1-61080-773	Kuwait	Tel. 965-481-2123
Bahrain	Tel. 973-252292	Lebanon	Tel. 961-1-216827
Belgium	Tel. 32-2-481-0481	Malaysia	Tel. 60-3-5549-5422
Brazil	Tel. 55-11-3889-4035	Mexico	Tel. 52-5-488-1000
Canada	Tel. 1-905-624-5010	Netherlands	Tel. 31-73-640-2721
China	Tel. 86-10-6515-8828	New Zealand	Tel. 64-9-272-0100
(Hong Kong)	Tel. 852-2313-0888	Norway	Tel. 47-22916800
Czech Republic	Tel. 42-02-2166-4120	Pakistan	Tel. 92-21-455-5766
Denmark	Tel. 45-43-200-853	Panama	Tel. 507-229-2955
Egypt	Tel. 20-2-3938151	Peru	Tel. 51-145-29470
Finland	Tel. 358-9-521-5253	Philippines	Tel. 63-2-633-6162
France	Tel. 33-149464388	Poland	Tel. 48-3912-3173
Germany	Tel. 49-611-18160	Portugal	Tel. 351-21-424-8630
Greece	Tel. 30-1-969-2300	Puerto Rico	Tel. 1-787-750-4300
Hungary	Tel. 36-1-382-6060	Russia	Tel. 7-095-258-4237
Indonesia	Tel. 62-21-801-5666 62-21-385-9449	Saudi Arabia	Tel. 966-1-465-0709
Iran	Tel. 98-21-2271463	Singapore	Tel. 65-843-7691
Italy	Tel. 39-02-67881	Slovakia	Tel. 421-7-5292-1423
		South Africa	Tel. 27-11-313-1400

Spain	Tel. 34-93-425-9300
Sweden	Tel. 46-8-680-8238
Switzerland	Tel. 41-41-259-9632
Taiwan	Tel. 886-2-2725-9100
Thailand	Tel. 66-2-731-8888
Turkey	Tel. 90-216-416-0150
U.A.E.	Tel. 971-4-282201
U.K	Tel. 44-118-902-9210
U.S.A.	Tel. 1-201-348-7621

